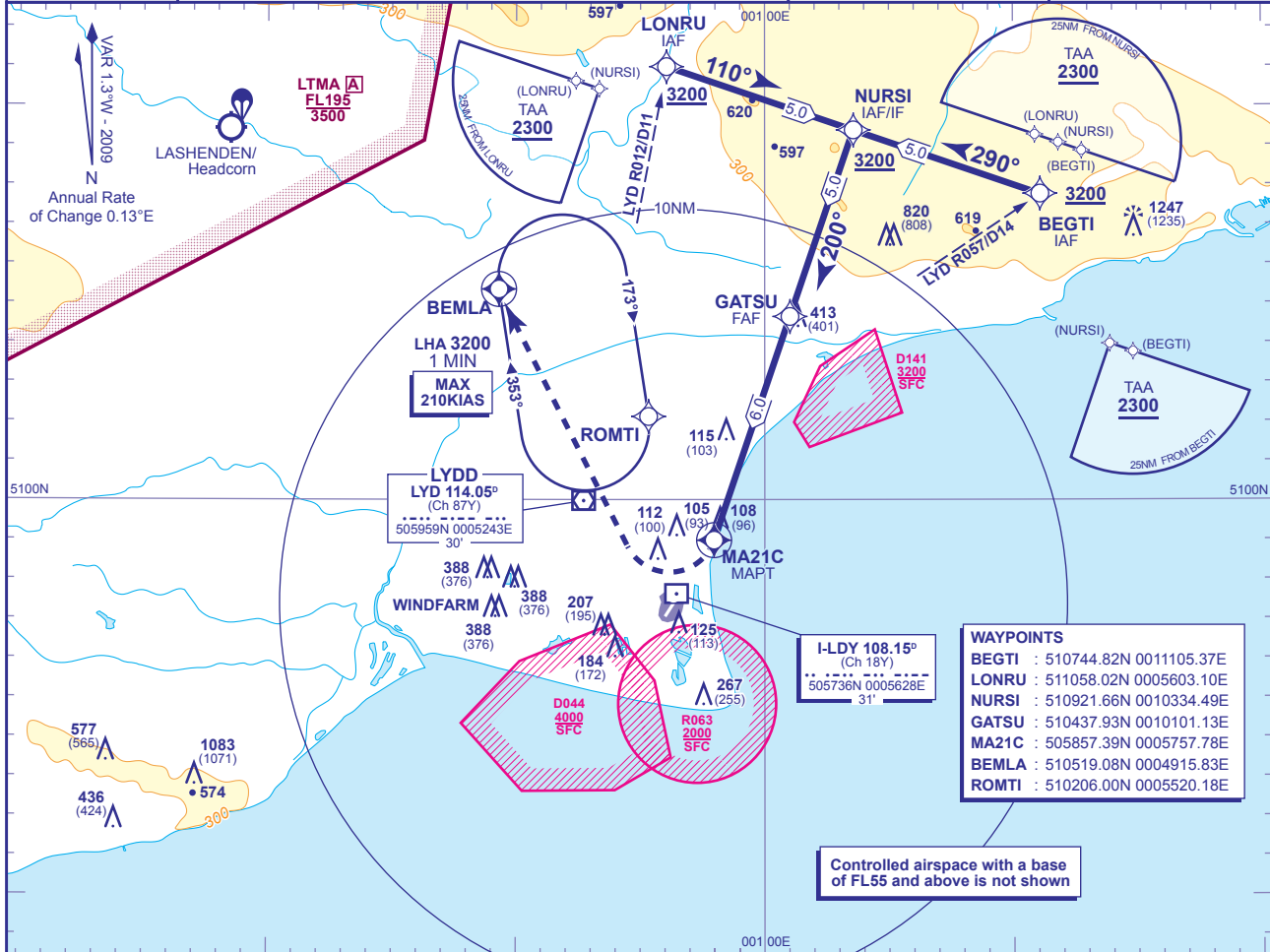


INSTRUMENT APPROACH CHART - ICAO

LYDD
RNAV (GNSS) Z
RWY 21
 (ACFT CAT C)

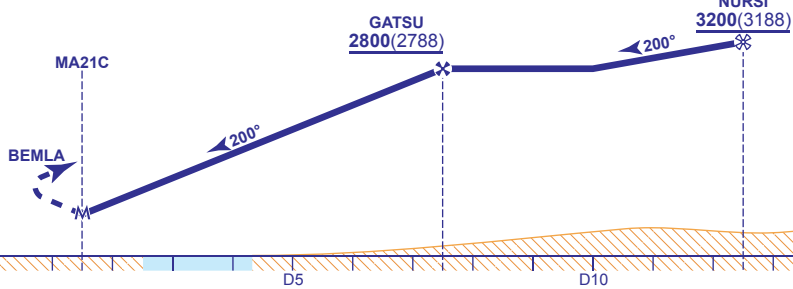
	APP 120.700	LYDD APPROACH	AD ELEVATION 13
	TWR 128.525	LYDD TOWER	THR ELEVATION 12
	ATIS 129.225	LYDD INFORMATION	OBSTACLE ELEVATION 1247 AMSL (1235) (ABOVE THR)
			BEARINGS ARE MAGNETIC
			TRANSITION ALTITUDE 3000



RECOMMENDED PROFILE Gradient 6.01%, 365FT/NM

NM to MAPT(MA21C)	6	5	4	3	2	1
ALT(HGT)	2800(2788)	2430(2418)	2070(2058)	1700(1688)	1340(1328)	970(958)

MAPT (MA21C) (1.5NM before THR RWY 21)
 Turn right as soon as possible to **BEMLA** climbing to 3200 to join the hold at **ROMTI** or as directed by ATC. Remain clear of D044.



Aircraft Category		C	Rate of descent					
OCA (OCH)	LNAV	610(598)	G/S KT	160	140	120	100	80
VM(C)OCA (OCH AAL)	Total Area	N/A	FT/MIN	970	850	730	610	490
	West of RWY 03/21	790(777)						

- NOTES**
- FAT offset 14° from RWY 21 C/L.
 - DME I-LDY will read zero at THR RWY 21.
 - MAX speed for procedure 180KIAS.
 - MAX speed on MAP 150KIAS until MAP initial turn completed.
 - A/C to remain clear of D141 on approach and D044 on MAP.

CHANGE: OBSTACLES.

AERO INFO DATE 04 NOV 09