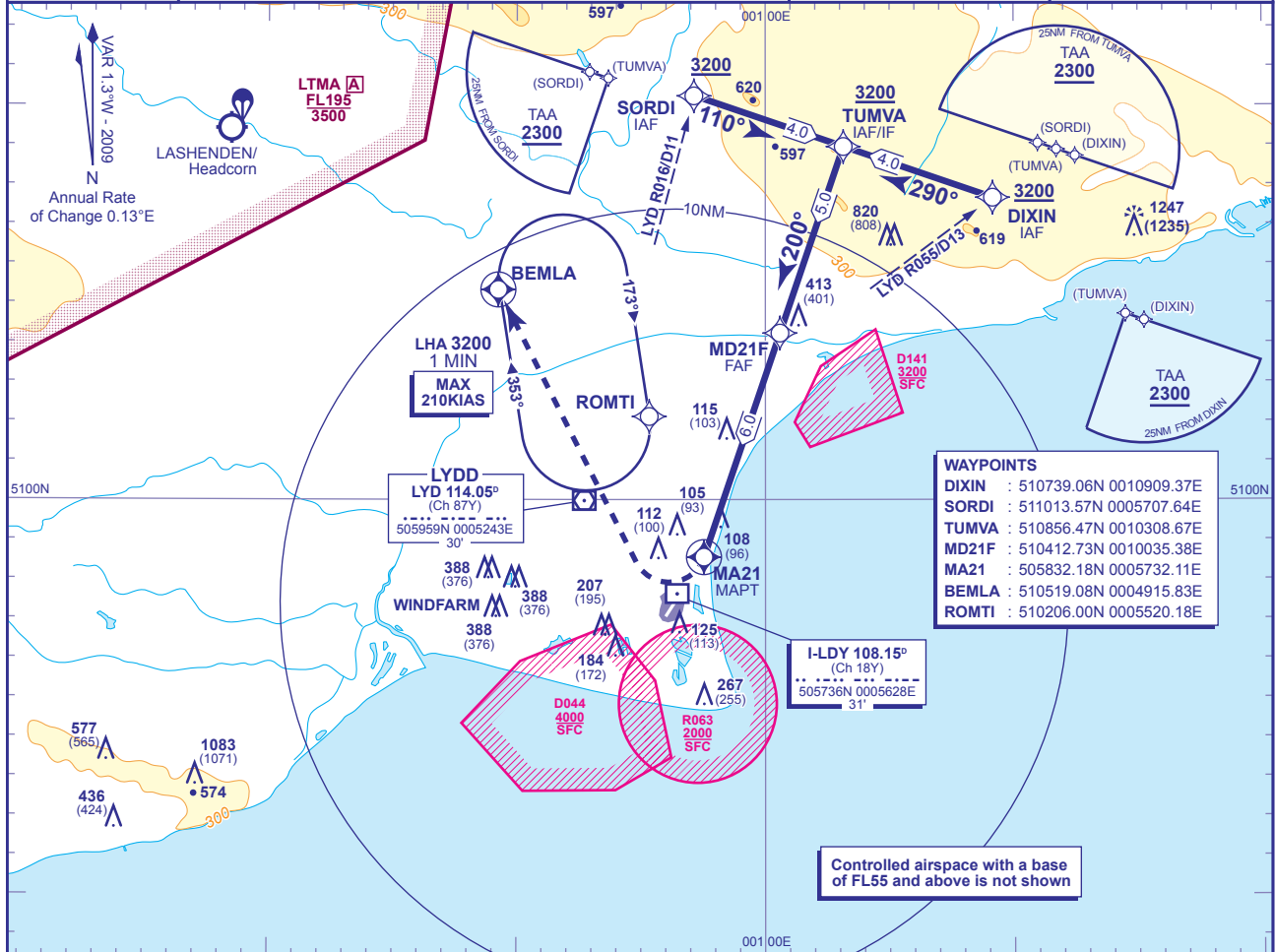


INSTRUMENT APPROACH CHART - ICAO

LYDD
RNAV (GNSS) Y
RWY 21
 (ACFT CAT A,B)

	APP 120.700	LYDD APPROACH	AD ELEVATION 13
	TWR 128.525	LYDD TOWER	THR ELEVATION 12
	ATIS 129.225	LYDD INFORMATION	OBSTACLE ELEVATION 1247 AMSL (1235) (ABOVE THR)
			BEARINGS ARE MAGNETIC
			TRANSITION ALTITUDE 3000



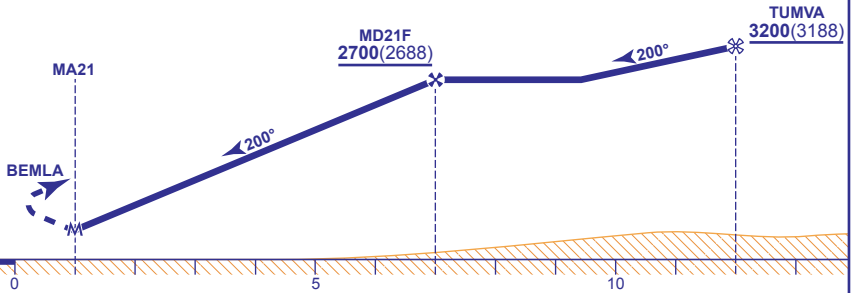
WAYPOINTS

DIXIN	: 510739.06N 0010909.37E
SORDI	: 511013.57N 0005707.64E
TUMVA	: 510856.47N 0010308.67E
MD21F	: 510412.73N 0010035.38E
MA21	: 505832.18N 0005732.11E
BEMLA	: 510519.08N 0004915.83E
ROMTI	: 510206.00N 0005520.18E

RECOMMENDED PROFILE Gradient 6.21%, 377FT/NM

NM to MAPt(MA21)	6	5	4	3	2	1
ALT(HGT)	2700(2688)	2320(2308)	1950(1938)	1570(1558)	1190(1178)	810(798)

MAPt (MA21) (1NM before THR RWY 21)
 Turn right as soon as possible to **BEMLA** climbing to **3200** to join the hold at **ROMTI** or as directed by ATC. Remain clear of **D044**.



Aircraft Category	A	B	Rate of descent	G/S KT	160	140	120	100	80
	OCA (OCH)	LNAV		440(428)	490(478)	FT/MIN	1010	880	750
VM(C)OCA (OCH AAL)	Total Area	510(497)	N/A						
	West of RWY 03/21	N/A	510(497)						

- NOTES**
- FAT offset 14° from RWY 21 C/L.
 - DME I-LDY will read zero at THR RWY 21.
 - MAX speed for procedure 160KIAS.
 - A/C to remain clear of D141 on approach and D044 on MAP.

CHANGE: OBSTACLES.

AERO INFO DATE 04 NOV 09