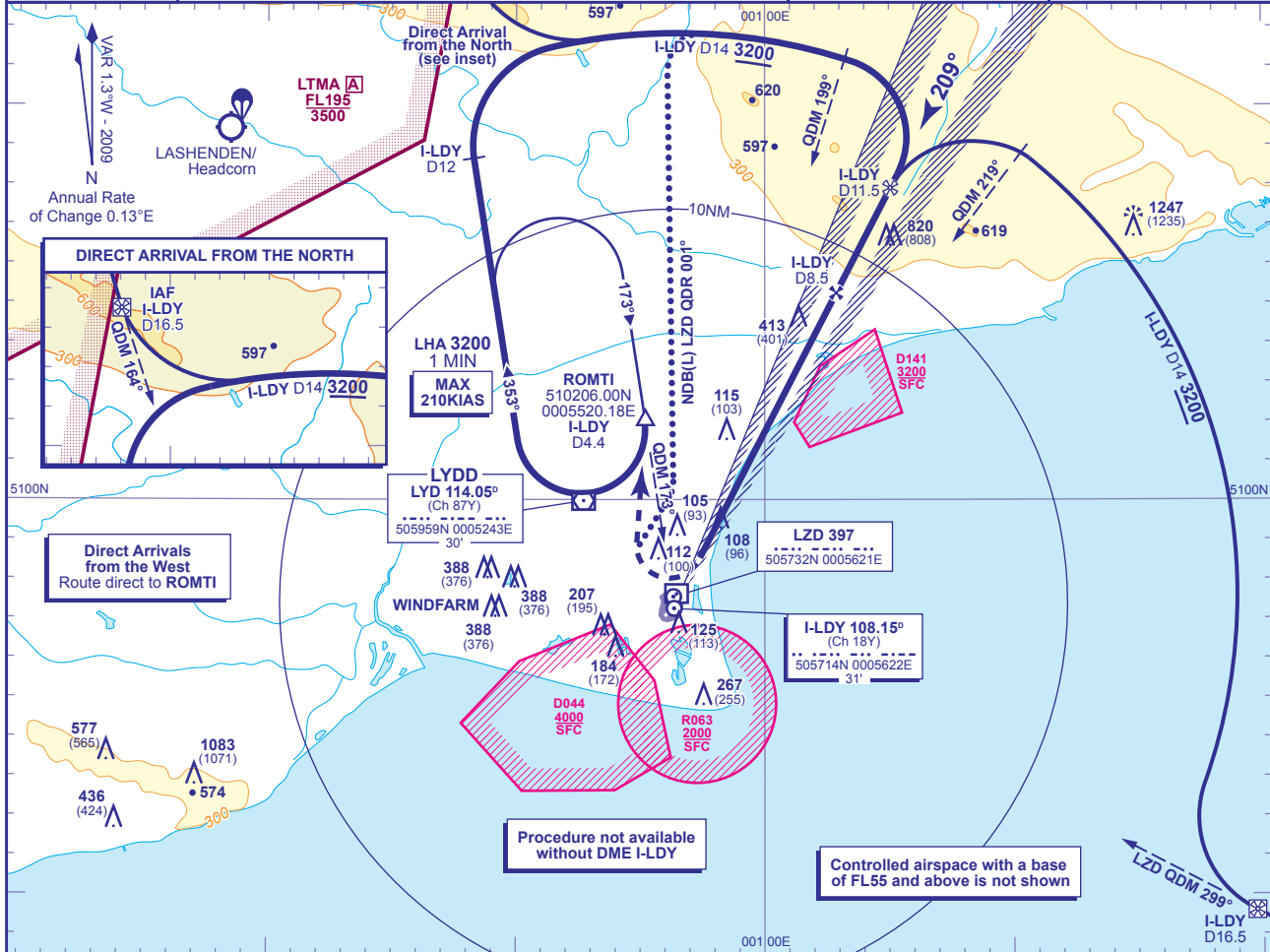


INSTRUMENT APPROACH CHART - ICAO

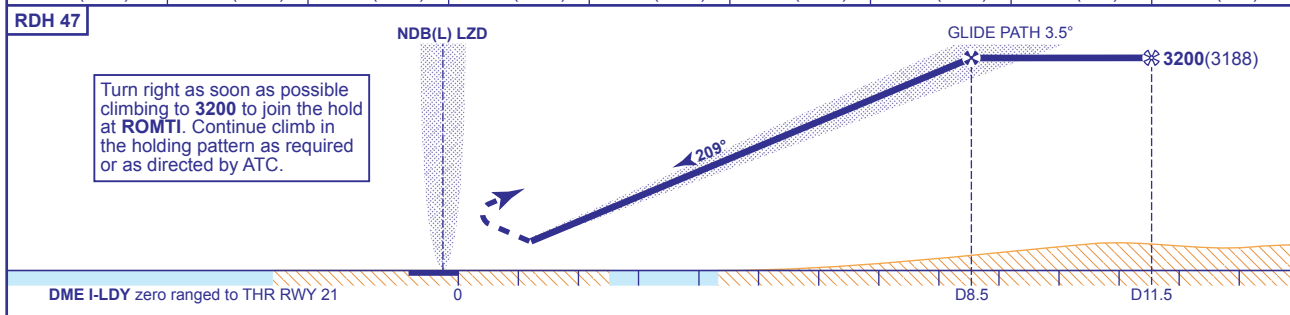
LYDD
OFFSET
ILS/DME
RWY 21
 (ACFT CAT A,B,C)

	APP 120.700 TWR 128.525 ATIS 129.225	LYDD APPROACH LYDD TOWER LYDD INFORMATION	AD ELEVATION 13 THR ELEVATION 12 OBSTACLE ELEVATION 1247 AMSL (1235) (ABOVE THR) BEARINGS ARE MAGNETIC	TRANSITION ALTITUDE 3000
--	--	---	---	--------------------------



RECOMMENDED PROFILE GLIDE PATH 3.5°, 370FT/NM

NM	8	7	6	5	4	3	2	1
ALT(HGT)	3020(3008)	2650(2638)	2280(2268)	1910(1898)	1540(1528)	1170(1158)	800(788)	440(428)



DME I-LDY zero ranged to THR RWY 21				0	D8.5	D11.5				
Aircraft Category	A	B	C	Rate of descent	G/S KT	160	140	120	100	80
OCA (OCH)	ILS	430(418)	490(478)		570(558)	FT/MIN	980	860	740	610
VM(C)OCA (OCH AAL)	Total Area	510(497)	N/A	N/A						
	West of RWY 03/21	N/A	510(497)	790(777)						

ALTERNATIVE PROCEDURE (Subject to ATC approval) From the MAP continue turn onto track 034°. Climbing to 3200 to intercept NDB(L) LZD QDR 001°. Fly outbound to intercept the DME 14 arc, turn right then continue as for basic procedure.

NOTE
 1 Localizer offset 5° and intercepts extended RWY C/L 900m before THR RWY 21.
 2 A/C to remain clear of D141 on approach and D044 on MAP.
 3 MAX KIAS for MAP: CAT A 110KIAS, CAT B 150KIAS, CAT C 160KIAS.

CHANGE: OBSTACLES.

AERO INFO DATE 26 OCT 09